



# Exterior LED Up/Down Light

Cat. No. LWL013KPS, LWL023KPS, LWL023KWE,  
LWL063KPS, LWL063KBL



LWL013KPS

LWL023KPS/LWL023KWE (WHITE)

LWL063KPS/LWL063KBL (BLACK)

 Class II Construction

Please read instruction sheet before commencing installation. Installation must be performed by a registered electrical contractor.

## 1 Description

Cat no.	Description	Height	Width	Depth	Lumens	Colour Temp	IP Rating	Beam Angle
LWL013KPS	<b>Anodised aluminium</b> Up/Down Light 10W IP54 LED (non-dimmable)	90mm	110mm	25mm	380lm	3000K	IP54	120°
LWL023KPS	<b>Anodised aluminium</b> Up/Down Light 7.5W IP54 LED (non-dimmable)	68mm	80mm	125mm	430lm	3000K	IP54	up to 120°
LWL023KWE	<b>Powdercoat White</b> Up/Down Light 7.5W IP54 LED (non-dimmable)	68mm	80mm	125mm	430lm	3000K	IP54	up to 120°
LWL063KPS	<b>Anodised aluminium</b> Up/Down Light 8W IP54 LED (non-dimmable)	59mm	187mm	100mm	350lm	3000K	IP54	120°
LWL063KBL	<b>Powdercoat Black</b> Up/Down Light 8W IP54 LED (non-dimmable)	59mm	187mm	100mm	280lm	3000K	IP54	120°

## 2 LED Lamp Life

30,000 Hrs Rated Average Lamp LED Life @25°C.

## 3 Installation Instructions

Follow the steps below.

- Using mounting bracket as a template mark and drill holes for mounting.
- Fix the mounting bracket onto the wall with screws. Silicone should be added to screw heads and wire entry to ensure IP rating is maintained.
- Connect the active and neutral supply wires to the driver terminal. Ensure double-insulated cable is brought in to the LED driver housing. Refer to Fig. 4.
- Fix the æxture to the mounting bracket using the grub screws supplied.

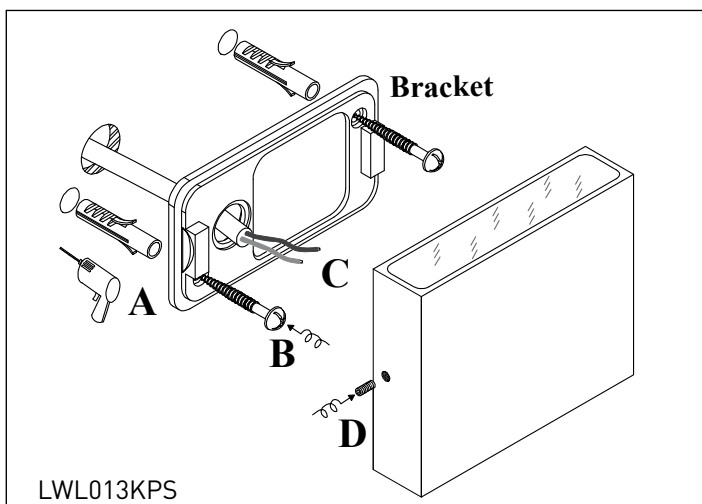


Figure 1.

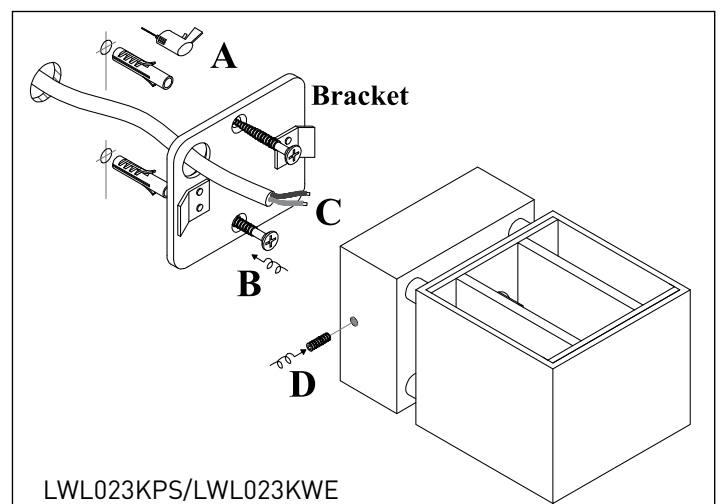


Figure 2.

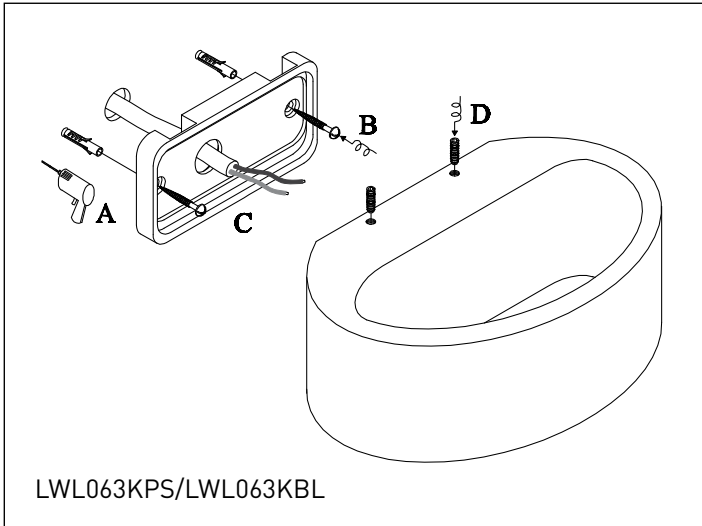


Figure 3.

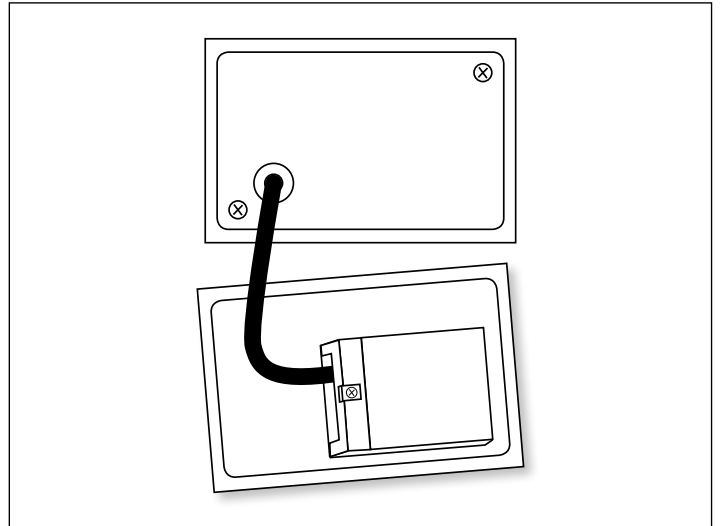


Figure 4.

^ Lumen values quoted are typical and can vary at different colour temperatures and between manufacturers.  
 # Installation must be by a Registered Electrical Contractor.

### Disclaimers

**1.** This product must be installed and used as per these instructions. **2.** This product should only be cleaned with a damp cloth. Cleaning agents and solvents should not be used. **3.** The IP rating of this product is only valid when installed on a flat and non-porous surfaces. Additional sealing may be required for irregular surfaces. **4.** This product has been designed to minimise the effects of interference from off peak electricity signals. Interference in the form of light flicker is still possible in some cases depending on proximity to the signal injection point. **5.** This product is not dimmable. **6.** This product contains no serviceable parts and no attempt should be made to repair this product. If the product is faulty it should be discarded. **7.** Severe electromagnetic interference from other products may cause malfunction of this product. **8.** The material in this product may vary in colour from batch to batch. Colour matching from one batch to another cannot be guaranteed. **9.** Electrical installations periodically receive transient over voltages. This product has been designed to minimise the effect of such voltages on connected equipment. It may not give full protection for extreme over voltage transients such as those resulting from a close lighting strike. **10.** Lamp LED life is an average and will be reduced by frequent switching. **11.** This product utilises intellectual property in the form of registered designs, trademarks, and/or patents. Such intellectual property remains the property of HPM Legrand in all cases. **12.** HPM Legrand reserves the right to modify the specifications of this product at any time.

### Warranty

HPM Legrand warrants this product for a period of 6 years from the date of purchase. These goods come with guarantees that cannot be excluded under the Australian and New Zealand Consumer Laws. You are entitled to a replacement or a refund for a major failure and for compensation for any other reasonably foreseeable loss or damage. You are also entitled to have the goods repaired if the goods fail to be acceptable quality and the failure does not amount to a major failure. See the Warranty card enclosed with this product for further details.

### Customer Service

For all Customer Service and Technical Support please call Monday to Friday during business hours.

HPM Legrand Australia  
 1300 369 777  
[www.hpm.com.au](http://www.hpm.com.au)

HPM Legrand New Zealand  
 0800 476 009  
[www.hpm.co.nz](http://www.hpm.co.nz)

ABN: 31 000 102 661

A Group brand | legrand